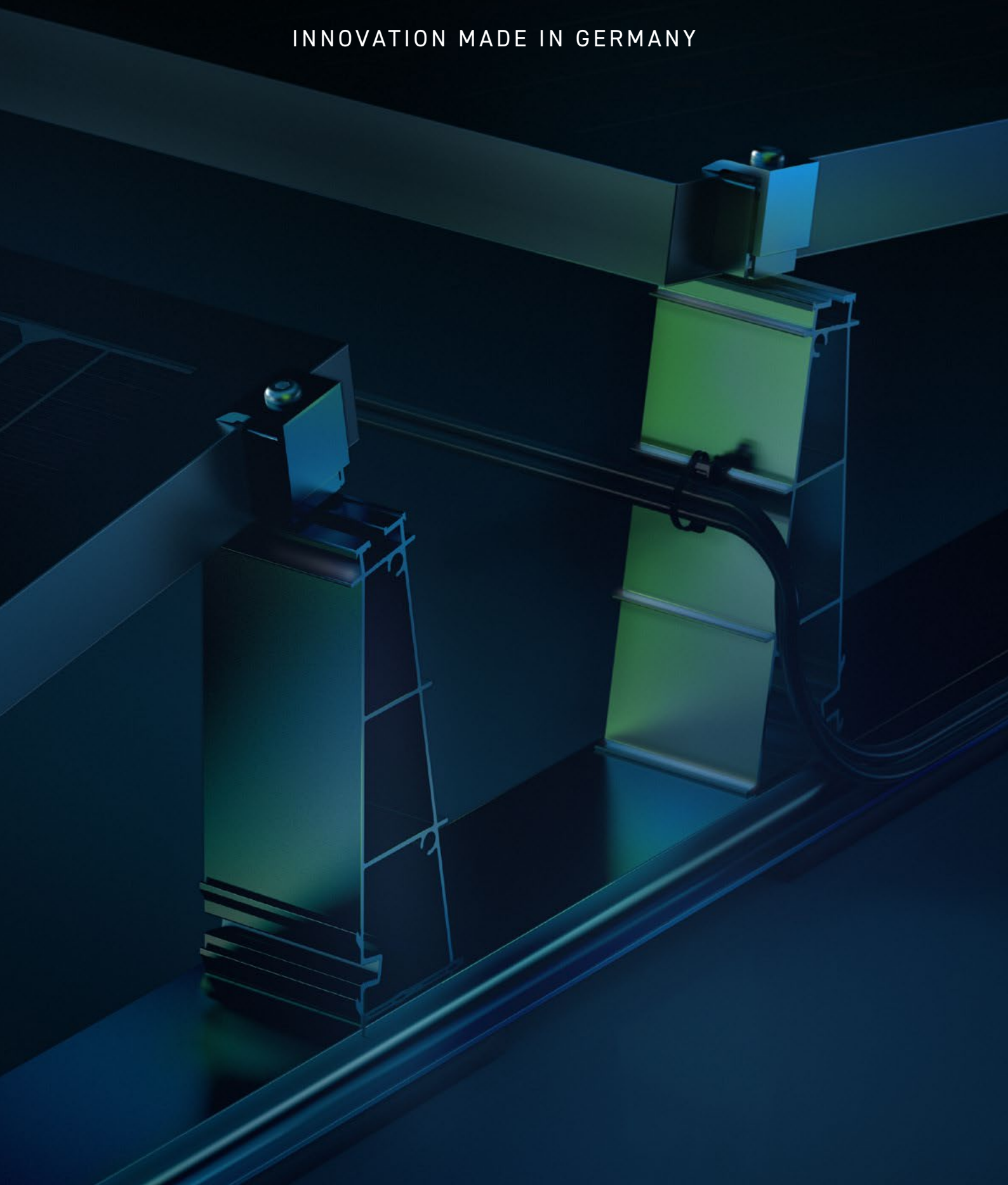


SCOTT PMT SYSTEMS 2023

INNOVATION MADE IN GERMANY



Contents

WE ARE PMT

Company	5
----------------	----------

PMT EVO 2.0

System information	7
Overview PMT EVO 2.0	8
Base & Tower	9
Base Profile	10
Base Profile – East-West & South	11
Base Profile Edge	12
Connector Base Profile – East-West	12
Rear Cover-Tower & Rear Cover	13
Cross- & Ballast Strut	14
Connector for Cross- and Ballast Strut	15
Adapter for Cross- and Ballast Strut	15
Additional components	16
Ridge Connector	16
Ridge Connector in profile direction	17
USO-Connection	17
Cable Tray Base Profile	18
Support & Adapter for Cable Tray	18
Ballast Tub	19
Cover Cable Duct	19
Mid Support	20
Side Cover	21
Special System Multi-Monti	22
Accessories	23
Distance Gauge	23
Support Solar Sensor	23
Cable Tie with Edge Clip	23

PMT FLAT DIRECT

System information	25
Overview PMT FLAT DIRECT	26
Base Rails & Ridge Connectors	27
Base Rail	27
Connector Base Rail	27
Ridge Connector	27
Mounting Rails & Accessories	28
Mounting Rail	28
Connector Mounting Rail	28
Cross-Rail Connector	28
Mounting Foot Connection	29
Rail 40	29
Bracket 40 & 60 mm	29
Accessories	30
Cable duct cover	30
PE-Foam RG 40 Black	30
Cable Tie with Edge Clip	30
Bending Tong	30
MULTI-SYSTEM COMPONENTS	
Module & Ballast Clamps	32
Grounding Sheet	32
Mounting Foot	33
Mounting Foot & Sleeve	33
Accessories	33
Fixation Screws for Mounting Foot	33
Screws, Nuts & Washer	34



INTERACTIVE CATALOGUE
Page selection with a click

N E X T

L E V E L

M O U N

T I N G

WITH AN
ASSEMBLY SYSTEM
FROM SCOTT PMT
YOU OPT FOR
QUALITY AND
SAFETY
FAR BEYOND THE
USUAL MARKET
STANDARDS.

VISION

For us, NEXT LEVEL MOUNTING means the best service, an uncompromising safety and sustainable quality. We work daily with this claim to offer our customers the perfect photovoltaic solution.

Thanks to a continuous further development which is based on the requirements of our target groups, we can act directly on the market's needs. With numerous national and international clients we see our future in a global orientation and would like to grow further as a company.

PROMISE

Our long-lasting, proven and service-oriented solutions meet the highest safety and quality requirements.

We constantly test our developments and continuously optimize them through procedures such as indepth tests in the wind tunnel, component tests and theoretical calculations.

The high demands on aesthetics and functionality do not compete with our systems' cost-efficiency.



SCOTT PMT EVO 2.0

SIMPLE ASSEMBLY, CERTIFIED SAFETY AND HIGH QUALITY
STANDARDS FOR YOUR FLAT ROOF PROJECTS.



QUICK ASSEMBLY

The average time needed for the assembly is approx. 10 minutes per module and installer. Thanks to non-interchangeable click-connections, the PV systems can be installed easily and safely.



LIGHTNING CURRENT CARRYING CAPACITY

Our flat roof systems are capable of carrying lightning currents and can therefore be integrated into the lightning protection concept of the building. The lightning current carrying capacity has been verified according to DIN EN 62561

(VDE 0185-561-1):2013-02.



SAFETY FIRST

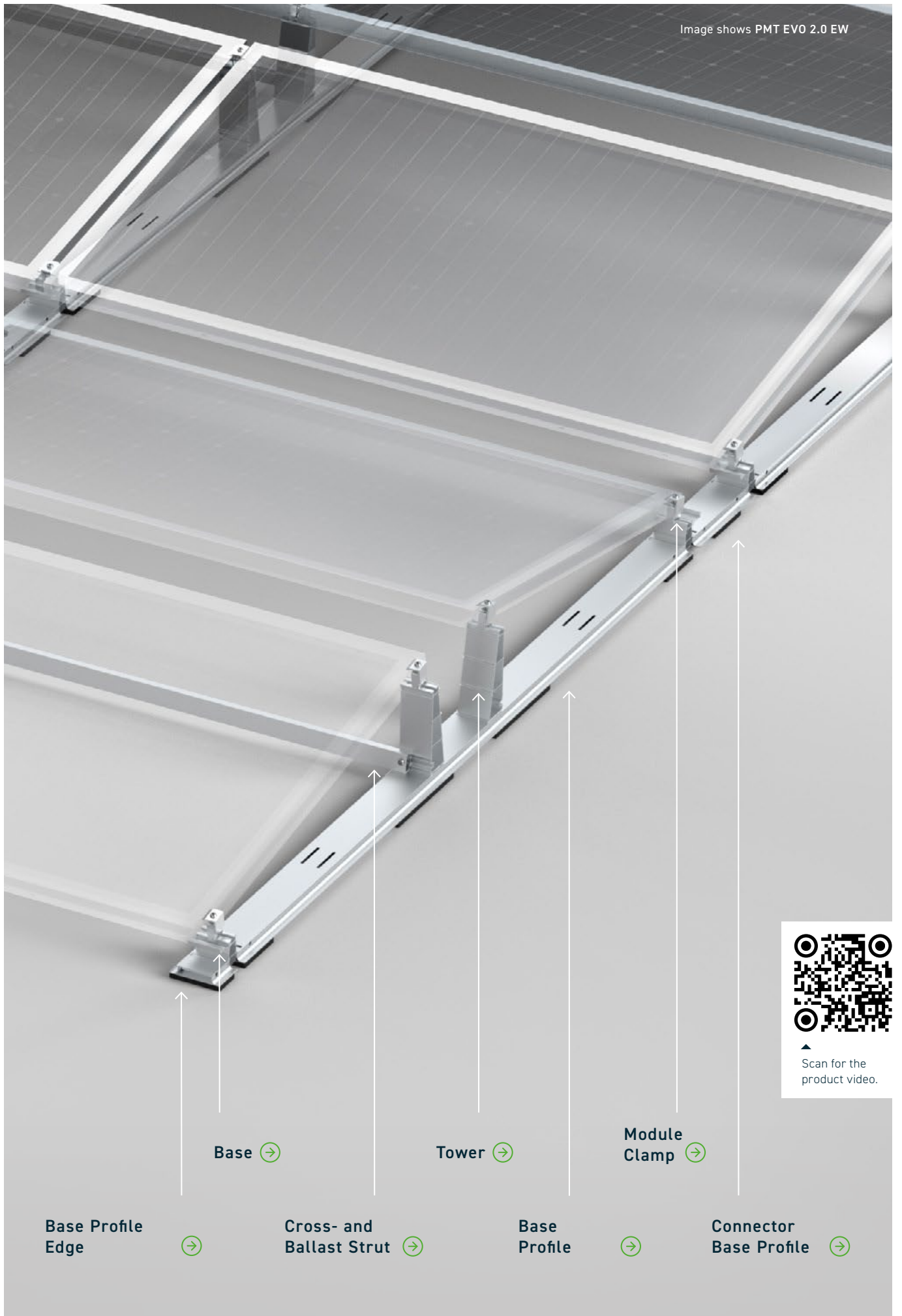
We have received the General Building Authorities Approval with approval no. Z-14.4-790 for our aerodynamic flat roof system PMT Evolutions and the further development PMT EVO 2.0. We test and verify our system regularly within the scope of wind tunnel tests, experimental component examinations and on the basis of the current DIN standards.

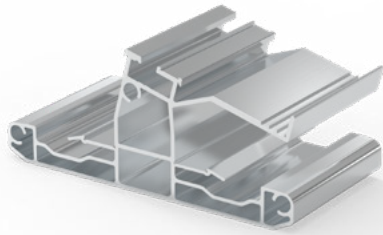


VARIABLE DIMENSIONS POSSIBLE

Our photovoltaic mounts are basically suitable for all common framed modules on the market. PMT EVO 2.0 covers module widths from 980 to 1300 mm and module lengths between 1550 and 2400 mm.

Image shows PMT EVO 2.0 EW





BASE

The base serves as a lower support for the modules and is available in the inclination variants 10° and 15°. The design depends on the module width. It is fixed by clicking it into the base profiles.

Item no.	Details	Module Width	Packaging
52215-1384-01	Base 10°	960-1015 mm	72
52215-1816		1016-1300 mm	
52215-1722	Base 15°	985-1015 mm	
52215-2194		1016-1068 mm for South 1016-1080 mm for East-West	



TOWER

The tower serves as the upper support and is available in the inclination variants 10° and 15°. It is fixed by clicking it onto the main floor profiles.

Item no.	Details	Packaging
52215-1385	Tower 10°	64
52215-1676	Tower 15°	32



BASE PROFILE

The base profiles form the basis for the system on the roof covering and also serve as attachment points for Base and Tower. The corresponding recesses are made using the latest laser technology.

The main floor profiles are supplied including fixed high-tech protective mats. The number of glued protective mats varies depending on the profile length and roof condition.

Base profile - East-West

For each base profile there are 3 types of covering. Their use depends on the insulation.



Standard

Contact surface: 0,099 m²
Contact surface: 100%



Partial

Contact surface: 0,156 m²
Contact surface compared to standard: 157%



Full surface

Contact surface: 0,205 m²
Contact surface compared to standard: 207%



Sample illustration on the base floor profile 2013 mm

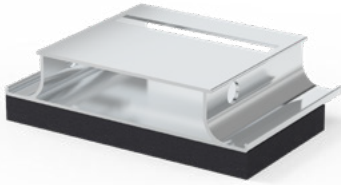


BASE PROFILE EAST-WEST

Item no.	System	System Version & Module Width	Length Base Profile	Type of bonding	
52215-1767-01	East-West 10° & 15°	Eco: 1036-1080 mm Comfort: 985-1035 mm	2013 mm	Standard	80
52215-1770-02				Partial	
52215-1768-02				Full surface	
52215-2119-01	East-West 10°	Eco: 1106-1150 mm Comfort: 1036-1105 mm	2150 mm	Standard	
52215-2638-01				Partial	
52215-2641-01				Full surface	
52215-2576		Eco: 1156-1200 mm Comfort: 1106-1155 mm	2250 mm	Standard	
52215-2644				Partial	
52215-2645				Full surface	
52215-2745		Eco: 1206-1250 mm Comfort: 1156-1205 mm	2350 mm	Standard	
52215-2746				Partial	
52215-2747				Full surface	
52215-2748		Eco: 1256-1300 mm Comfort: 1206-1255 mm	2450 mm	Standard	
52215-2749				Partial	
52215-2750				Full surface	

BASE PROFILE SOUTH

Item no.	System	System Version & Module Width	Length Base Profile	Type of bonding	
52215-1757	South 10° & 15°	Comfort: 985-1068 mm	1467 mm	Standard	80
52215-1760				Partial	
52215-1758				Full surface	
52215-3042		Eco-10°: 1036-1150 mm Comfort-10°: 985-1105 mm Comfort-15°: 985-1068 mm	1618 mm	Standard	
52215-3043				Partial	
52215-3044				Full surface	
52215-3036	South 10°	Eco: 1176-1300 mm Comfort: 1106-1245 mm	1768 mm	Standard	
52215-3037				Partial	
52215-3038				Full surface	

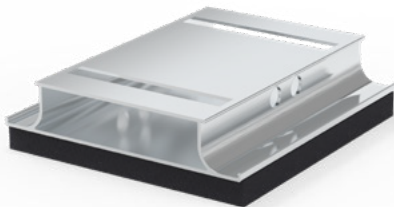


BASE PROFILE EDGE

The base profile edge for the south and east-west system is clicked into the base at the edge of the module field and forms the end of the system compound.

The profile is covered with a high-tech protective mat.

Item no.	Length	Packaging
52215-1374	75 mm	150



CONNECTION BASE PROFILE EAST-WEST

The connecting base profile is used to connect the system between one Base and the next Base. The length is determined by the selected row spacing.

The profile is covered with a high-tech protective mat.

Item no.	Details	Length	Packaging
52215-1434	Eco/Comfort* – 60 mm Maintenance aisle	127 mm	84
52215-1377	Super-Comfort* – 200 mm Maintenance aisle	267 mm	44
52215-1378	Super-Comfort* – 300 mm Maintenance aisle	367 mm	28
52215-1595	Super-Comfort* – 500 mm Maintenance aisle	567 mm	120

*The distance between the rows of mounting points depends on the module widths and the base used for this purpose (B10 M6/B10).

60 mm Maintenance aisle – Module spacing von 18/57 mm

200 mm Maintenance aisle – Module spacing von 158/197 mm

300 mm Maintenance aisle – Module spacing von 258/297 mm

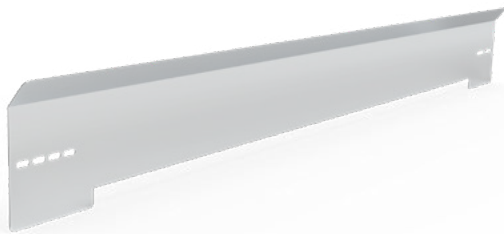
500 mm Maintenance aisle – Module spacing von 458/497 mm



REAR WALL TOWER

Wind deflectors (back walls) are required for the installation of the south system. These reduce the lifting force. The rear wall tower serves as a fastening point and is clicked onto the base profile.

Item no.	Details	Packaging
52215-1386	Rear Wall Tower S 10° South 10° inclination for module width 985-1068mm	92
52215-1678-01	Rear Wall Tower S 10°/15° South 10° inclination for module width 1036-1300mm South 15° inclination for module width 985-1068mm	48



REAR WALL SOUTH

The rear wall is attached to the rear wall towers. Depending on the angle of inclination and module length, there are different dimensions. Please contact us for module widths over 1220 mm or module lengths over 2200 mm.

Mounting with:
Screw M8×16, Item no. 52215-1599

Item no.	Inclination angle	Module Width	Module Length	Length Rear Wall	
52215-1391	10°	985-1068 mm	1590-1740 mm	1800 mm	100
52215-2221			1741-1840 mm	1900 mm	
52215-2218			1841-1940 mm	2000 mm	
52215-1658			1941-2040 mm	2100 mm	
52215-2219			2041-2140 mm	2200 mm	
52215-1679	15°	1036-1220 mm	1590-1740 mm	1800 mm	
52215-2267			1741-1840 mm	1900 mm	
52215-2268			1841-1940 mm	2000 mm	
52215-1813			1941-2040 mm	2100 mm	
52215-2265			2041-2140 mm	2200 mm	
52215-3087	10°	1036-1220 mm	1590-1740 mm	1800 mm	
52215-3086			1741-1840 mm	1900 mm	
52215-3081			1841-1940 mm	2000 mm	
52215-3085			1941-2040 mm	2100 mm	
52215-3084			2041-2140 mm	2200 mm	
52215-3083			2141-2240 mm	2300 mm	
52215-3082			2241-2340 mm	2400 mm	

CROSS & BALLAST STRUT

The cross strut and ballast strut increase the system stability and, as a double cross brace, also offer the possibility of supporting the ballast under the modules.

The cross braces are available in different lengths for module lengths from 1550 to 2407 mm. Please contact us for module lengths over 2308 mm.

Mounting with:
2×Screw M8×30, Item no. 52215-1460



Item no.	Length Cross Strut	Module Length	Packaging
52215-2204	1614 mm	1614-1639 mm	28
52215-1387	1648 mm	1640-1665 mm	
52215-1388	1682 mm	1666-1700 mm	
52215-1924	1717 mm	1701-1733 mm	
52215-2186	1752 mm	1734-1776 mm	
52215-2187	1787 mm	1777-1812 mm	
52215-2552	1832 mm	1813-1846 mm	
52215-2555	1931 mm	1913-1949 mm	
52215-1660	1990 mm	1978-2005 mm	
52215-2041	2017 mm	2006-2033 mm	
52215-2558	2030 mm	2034-2049 mm	
52215-1937	2067 mm	2050-2089 mm	
52215-2195	2102 mm	2090-2117 mm	
52215-2034	2130 mm	2118-2145 mm	
52215-2563	2195 mm	2177-2209 mm	
52215-2564	2228 mm	2210-2242 mm	
52215-2565	2261 mm	2243-2275 mm	
52215-2566	2294 mm	2276-2308 mm	

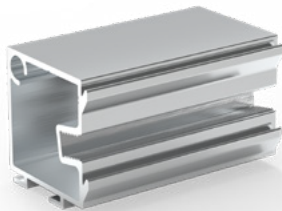


CONNECTOR FOR CROSS AND BALLAST STRUTS

The cross strut connector serves as a connecting element between the individual cross struts and ballast struts.

Mounting with:
2×Screw M8×30, Item no. 52215-1460

Item no.	Details	Length	Packaging
52215-1390-02	Cross strut connector with slot holes	390 mm	85
52215-1464	Cross strut connector universal	1180 mm	30



ADAPTER FOR CROSS AND BALLAST STRUTS

When using larger modules, it is necessary to use the assembly adapter for cross and ballast struts to ensure ballasting with ballast stones. The adapter is fixed by clicking it onto the base profiles.

Usage:
Module widths from 1036 mm in the comfort variant
Module widths from 1106 mm in the eco variant

Item no.	Details	Length	Packaging
52215-1962	Mounting adapter for cross and ballast struts	75 mm	42



RIDGE CONNECTOR

The ridge is built over in module direction in combination with this ridge connector. It is inserted into the cross and ballast struts and fixed with screws.

**Mounting on the cross strut with:
4 × Screw M8×30, Item no. 52215-1654**

Item no.	Length	Bending & Roof Pitch	Packaging
52215-2081	1180 mm	Without bending	50
52215-2250		1° / 0,5°	
52215-2088		2° / 1°	
52215-2071		2,5° / 1,25°	
52215-2040		3° / 1,5°	
52215-1717		4° / 2°	
52215-2085		4,5° / 2,25°	
52215-2269		5° / 2,5°	
52215-1720		6° / 3°	
52215-2140		7° / 3,5°	
52215-1946		8° / 4°	
52215-2704		9° / 4,5°	
52215-1740		10° / 5°	
52215-3370		1,5° / 0,75°	
52215-3249		3,5° / 1,75°	
52215-3550		12° / 6°	
52215-3258		14° / 7°	
52215-2661		16° / 8°	
52215-3393		20° / 10°	

RIDGE CONNECTOR IN PROFILE DIRECTION

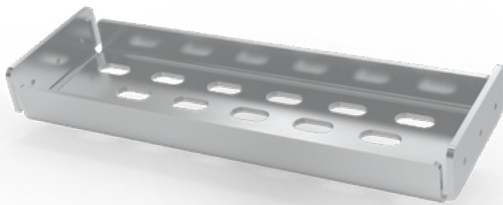


The ridge connector of the base profiles is used to connect the system over the ridge. The assembly is done by clicking it into the base on the respective ridge side. In general, the use of the ridge connector or alternative securing systems is recommended for changes in inclination over a high point.

Mounting with:
4 × Screw M8 × 16, Item no. 52215-1654

Item no.	Details	Length	Packaging
52215-1596-01	Ridge Connector	467 mm	144

USO-CONNECTION (UNIVERSAL-SOLMONT-CONNECTION)



The USO connection couples the solmont mounting foot (see cross system components) to the mounting system. They are connected at the installed double cross struts.

Mounting with:
6 × Thin Metal Screw 4,8 × 19, Item no. 52215-1933
1 × Serrated Washer M12, Item no. 52215-1408
1 × Washer DIN 9021-13-A2, Item no. 52215-4218
1 × Hex Nut M12, Item no. 52215-0969
1 × Hex Nut M12, Item no. 52215-1659

Item no.	Details	Compatible with Base Profile	Packaging
52215-1657	USO-Adapter East-West 10° - 319×100 mm	2013 / 2150 / 2250 / 2450 mm	70
52215-2371	USO-Adapter East-West 15° - 336×100 mm	2013 mm	70
52215-1698	USO-Adapter South / East-West 10° - 241×100 mm	South - 1467 / 1618 / 1768 mm East-West 10° - 2350 mm	80
52215-2368	USO-Adapter South 15° - 227×100 mm	South 15° - 1467 / 1618 mm	70
52215-2759	USO-Adapter South - 318×100 mm	1618 mm (Rear-Tower Position 2)	70
52215-2760	USO-Adapter South 10° - 385×100 mm	1768 mm (Rear-Tower Position 2)	50

CABLE TRAY BASE PROFILE



With the help of the cable tray base profile, cable lines can be integrated along the system to ensure optimum cable management.

The installation is carried out as an extension of the system by clicking into the base in the direction of the profile.

Mounting with:

1 × Screw M8×16, Item no. 52215-1599

Item no.	Details	Length	Packaging
52215-2145	Support cable tray	330 mm	1
52215-2146		630 mm	
52215-2147		930 mm	
52215-2149	Support cable tray	246 mm	

ADAPTER FOR LINE CONNECTION



With the help of the adapter for the supports of the cable tray the cable routing can be laid in the direction of the module.

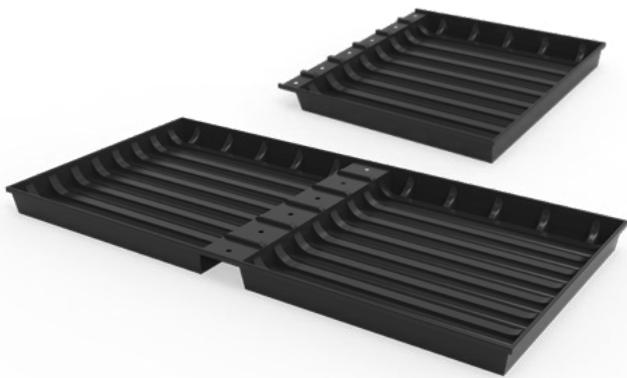
The installation is carried out at a 90° angle to the tower.

Mounting with:

2 × Screw M8×30, Item no. 52215-1460

2 × Thin Metal Screw 4,5×25, Item no. 52215-0571

Item no.	Details	Length	Packaging
52215-1612	Adapter cable tray - cross strut left	150 mm	1
52215-1611	Adapter cable tray - cross strut right		

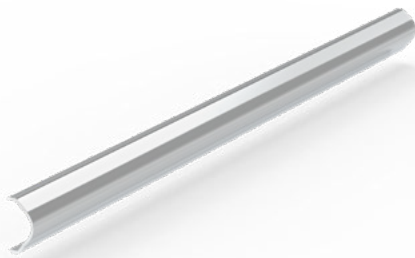


BALLAST TUB

The ballast tub is placed on the base profile. There are ballast tubs for existing substrate or gravel fill as well as tubs for roofs that have not yet been covered with gravel. The material is UV-resistant. The filling height is max. 70 mm.

Mounting with:
6 × Thin Metal Screw 48 × 19 E29, Item no. 52215-0656

Item no.	Details	Packaging
52215-1652	Ballast tub – existing gravel or substrate ballast – double tub	75
52215-2619	Ballast tub – existing gravel or substrate ballast – single tub	150
52215-1653	Ballast tub new construction - for roofs not yet covered with gravel - double tub	75
52215-2618	Ballast tub new construction - for roofs not yet covered with gravel - single tub	150

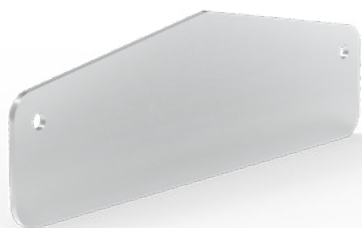


CABLE DUCT COVER

The cable duct cover is at the same time a cover and a holder for the cables that are routed along the base profiles. They protect the string lines from environmental influences such as UV radiation. The cable duct covers are attached to the east-west and south systems with a simple click mechanism.

Item no.	Details	Compatible with	Packaging
52215-2228	Cable duct cover 190 mm	Connector Base Profile – Length 127 mm	90
52215-2229	Cable duct cover 330 mm	Connector Base Profile – Length 267 mm	
52215-2230	Cable duct cover 430 mm	Connector Base Profile – Length 367 mm	
52215-2231	Cable duct cover 630 mm	Base Profile – Length 1467 mm	
52215-2611	Cable duct cover Tower 630 mm	Base Profile – Length 2013 / 2150 / 2250 / 2350 / 2450 mm	
52215-2602	Cable duct cover 800 mm	Base Profile – Length 1618 mm	

MID-SUPPORT EAST-WEST



The mid-support provides additional support for high snow loads, large modules and for insulation relief.

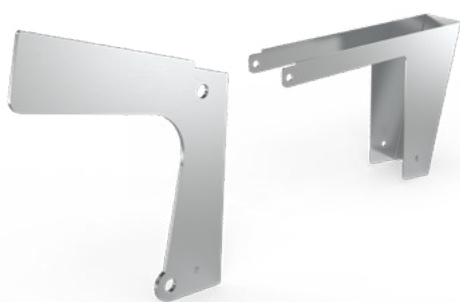
Different versions are available depending on module widths and required base profiles. The support is mounted onto the tower.

Mounting with:

2×Screw M8×16 – per Mid-Support 10°, Item no. 52215-1599

4×Screw M8×16 – per Mid-Support 15°, Item no. 52215-1599

Item no.	System & inclination angle	Module Width	Compatible Base Profile	Packaging
52215-1868	EW 10°	985-1080 mm	2013 mm	68
52215-2767		1036-1150 mm	2150 mm	34
52215-2768		1106-1200 mm	2250 mm	
52215-2757		1156-1250 mm	2350 mm	
52215-3002		1206-1300 mm	2450 mm	
52215-1869	EW 15°	985-1080 mm	2013 mm	40



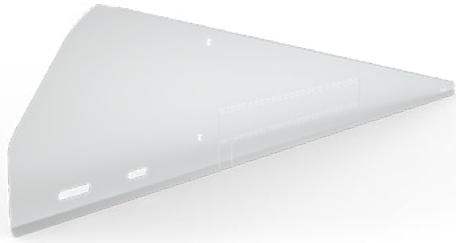
MID-SUPPORT SOUTH

The mid-support provides additional support for high snow loads, large modules and for insulation relief. Different versions are available depending on module widths and required main floor profiles. Two centre supports are fitted per tower (except for item no. 52215-2762).

Mounting with:

2×Screw M8×16 – per Mid-Support, Item no. 52215-1599

Item no.	System & Inclination angle	Module Width	Compatible Base Profile	Packaging
52215-1964	S 10°	985-1068 mm	1467 mm & 1618 mm – Rear Wall-Tower Position 1	90
52215-2761		1036-1150 mm	1618 mm – Rear-Wall-Tower Position 2	
52215-2762		1106-1300 mm	1768 mm (Mounting with 4 screws)	4
52215-2039	S 15°	985-1068 mm	1467 & 1618 mm	90



SIDE COVER EAST-WEST

In certain situations, the use of side covers can have a ballast-reducing effect. This is calculated individually for each planning.

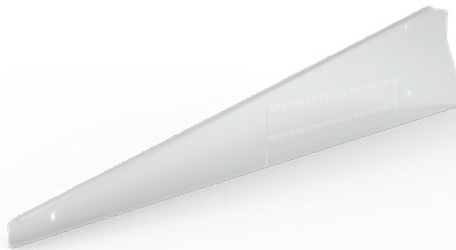
Mounting with:

6×Screw M8×16 – per double unit

7×Screw M8×16 – from a profile length of 2150 mm

Item no. 52215-1599

Item no.	Side	System & Inclination	Module Width	Base Profile	Length Cover	Packaging
52215-1608	left	EW 10°	985-1080 mm	2013 mm	1074 mm	100
52215-2742			1036-1200 mm	2150 / 2250 mm	1284 mm	
52215-2744			1156-1300 mm	2350 / 2450 mm	1423 mm	
52215-1822	right	EW 15°	985-1080 mm	2013 mm	1196 mm	50
52215-1392		EW 10°	985-1080 mm	2013 mm	1074 mm	
52215-2741			1036-1200 mm	2150 / 2250 mm	1284 mm	
52215-2743			1156-1300 mm	2340 / 2450 mm	1423 mm	
52215-1821		EW 15°	985-1080 mm	2013 mm	1196 mm	



SIDE COVER SOUTH

In certain situations, the use of side covers can have a ballast-reducing effect. This is calculated individually for each planning.

Mounting with:

4×Screw M8×16 – per Side Cover

Item no. 52215-1599

Item no.	Side	System & Inclination	Module Width	Length Cover	Packaging
52215-1607	links	S 10°	985-1068 mm	1250 mm	50
52215-3049			1036-1150 mm	1331 mm	
52215-3048			1106-1220 mm	1398 mm	
52215-2786			1176-1300 mm	1478 mm	
52215-1723	rechts	S 15°	985-1068 mm	1235 mm	50
52215-1393		S 10°	985-1068 mm	1250 mm	
52215-2787			1036-1150 mm	1331 mm	
52215-2785			1106-1220 mm	1398 mm	
52215-2784		1176-1300 mm	1478 mm		
52215-1724		S 15°	985-1068 mm	1235 mm	



SPECIAL SYSTEM MULTI-MONTI

The concrete ballasting is carried out under the substructure and is anchored in the main floor profiles using Multi-Monti screws. This raises the system itself. The main floor profiles for this system solution do not require any structural protection mats. A corresponding hole for ballast fixation is already provided. The system can be raised by a maximum of 25 cm in total.

Please contact us before starting any planning.

Item no.	Base Profile	Length	Module Width	Packaging
52215-1893	S with ballast hole	1467 mm	985-1068 mm	80
52215-3045		1618 mm	985-1150 mm	
52215-3039		1768 mm	1106-1300 mm	
52215-1639	EW with ballast hole	2013 mm	985-1080 mm	
52215-2763		2150 mm	1036-1150 mm	
52215-2764		2250 mm	1106-1200 mm	
52215-2765		2350 mm	1156-1250 mm	
52215-2766		2450 mm	1206-1300 mm	
52215-1693	Connector without protective mat	127 mm		129
52215-1588		267 mm		60
52215-1638		367 mm		43
52215-1585	Base Profile Edge	75 mm		198



DISTANCE GAUGE

The universal distance gauge is used for simple and quick alignment of the distances between the base profiles on the roof.

Item no.	Module Length	Packaging
52215-3014	1570-2450 mm	19



SUPPORT SOLAR SENSOR

Mounting solution for easy attachment of a solar sensor to the system. It is installed on the Tower.

Mounting with:
2 × Screw M8 × 16, Item no. 52215-1599

Item no.	Details	Packaging
52215-1647	Support Solar Sensor left 10°	1
52215-1894	Support Solar Sensor left 15°	
52215-1629	Support Solar Sensor right 10°	
52215-1895	Support Solar Sensor right 15°	



CABLE TIE WITH EDGE CLIP

The cable ties with edge clip guarantee orderly string routing along the system and prevent damage caused by moving or free cables.

Item no.	Size	Details	Min. tensile strength	Bundle diameter	Packaging
52215-1279	198×3,6 mm	With Edge Clip 0,5-2,5 mm Cable routing above and along the Attachment point; attachment to the tower	135 N	4-45 mm	500

SCOTT PMT FLAT DIRECT

SAFETY, FLEXIBILITY AND A
ASSEMBLY WITH LOW ROOF PENETRATION.
THE VARIABLE SYSTEM
FOR YOUR PITCHED ROOF PROJECT.



READY TO USE

The PV mounting system can be installed with low penetration. This makes it suitable for roof segments such as gable, monopitch, shed, barrel and butterfly roofs. Furthermore, it has proven itself for roof materials such as foil, sandwich panels and bitumen.



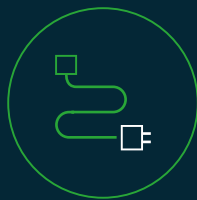
OPTIMAL LAYING

The floor rail is continuous and offers an optimal support surface.



INDEPENDENT FIXATION

The universal fastening covers clamping ranges from 30 to 50 mm. This enables variable use and speeds up planning.



INTEGRATED CABLE MANAGEMENT

Thanks to an integrated cover, the cables disappear immediately after installation. This also facilitates the routing of the cables and prevents disturbances during installation.




Base Rail →

Mounting Rail →

Ballast Clamp →

Module Clamp →

Cross Rail Connector →



Scan for the product video.



BASE RAILS

The base rails form the basis of the pitched roof system PMT FLAT DIRECT and are covered with high-tech protective mats.

Available are standard covering and full-surface covering for particularly high demands such as soft roof insulation. The last mentioned are available on request.

Item no.	Length	Type of adhering	Packaging
52215-0309	1830 mm	Standard	50
52215-0633	2785 mm		
52215-0310	3660 mm		



CONNECTOR BASE RAIL

The base rail connector is inserted into the base rails and fixed in place with the four pre-mounted grub screws.

Item no.	Details	Length	Packaging
52215-1465	4 grub screws, pre-assembled	390 mm	40



RIDGE CONNECTOR

The ridge connector is used for system coupling when the ridge is built over by connecting the base rails on both sides of the roof. The ridge connector is inserted into the base rails and fixed with the pre-assembled grub screws.

For optimum adjustment to the roof pitch, we recommend the bending pliers, Item no. 52215-0562.

Item no.	Details	Length	Packaging
52215-1467	6 Grub screw, pre-assembled	750 mm	48

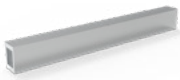


MOUNTING RAIL

The mounting rail forms the upper module support profile of the PMT FLAT DIRECT system. It is connected to the base rail below by cross rail connectors.

MOUNTING RAIL 47

Item no.	Length	Packaging
52215-3260	3300 mm	105
52215-4220	4405 mm	



CONNECTOR MOUNTING RAIL

The mounting rail connector connects the mounting rail strands together and keeps the system stable.

CONNECTOR MOUNTING RAIL 47

Item no.	Details	Length	Packaging
52215-0320	Inner connector for the mounting rail 47	195 mm	10

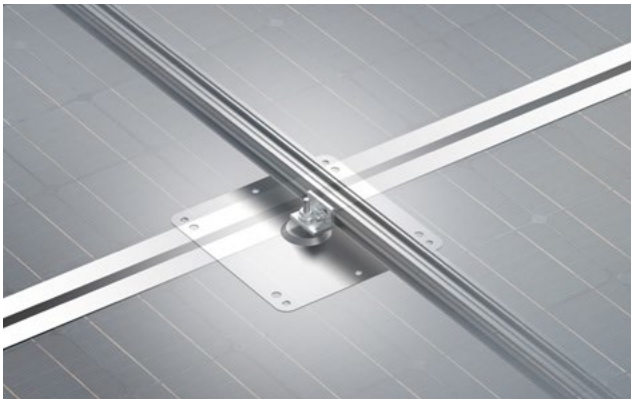


CROSS-RAIL CONNECTOR

The cross-rail connector connects the mounting rails with the floor rails at a 90° angle. The connector is clicked onto the base rails and fastened to the mounting rails via the lateral mounting channel.

CROSS-RAIL CONNECTOR

Item no.	Details	Packaging
52215-0322	Junction of the mounting rail & base rails in 90° angle	20



MOUNTING FOOT-CONNECTION

The mounting foot is attached to the roof substructure with precisely fitting screws. The listed components serve to connect the mounting foot to the the PMT FLAT DIRECT system.

You will find the different versions of the mounting feet in the section Multi-System Components.



RAIL 40

Item no.	Length	Connection to mounting foot	Packaging
52215-1752	3300 mm	Connection of mounting foot using bracket 60mm	100



BRACKET 40 & 60

The Angle 60 is used to attach the mounting foot to the additional mounting rail and the base rail. The angle 40 connects the base rail and mounting rail instead of the cross connector when installing on sandwich panels.

BRACKET 40 & 60 MM

Item no.	Details	Connection of	Pre-assembled accessories	Packaging
52215-0877	Bracket - 40 mm (pre-assembled)	Rail 40 to mounting foot	T-head screw M8×20 Item no. 52215-0445 Self-locking Nut M8 Item no. 52215-0564	20
52215-1235	Bracket- 60 mm (pre-assembled)	Mounting foot to ridge rail Ridge rail to base rail	T-head screw M8×25 Item no. 52215-1742 Self-locking Nut M8 Item no. 52215-0564	

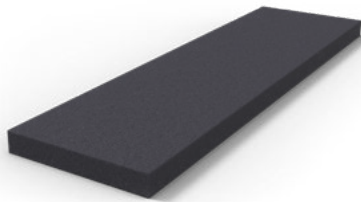


CABLE DUCT COVER

The cable duct cover protects the string cables from environmental influences such as UV radiation. The cover is placed on the bottom profile between the modules and snapped into place with an audible click.

CABLE DUCT COVER FLAT DIRECT

Item no.	Length	Packaging
52215-0560	385 mm	28



PE-FOAM RG 40 BLACK

The PE foam RG 40 black is self-adhesive on one side. It does not have an anti-slip coating. It is used as additional protection for the roof cladding when shortening the floor rails.

PE-FOAM RG 40 BLACK

Item no.	Details	Dimensions	Packaging
52215-0269	Self-adhesive on one side Use when shortening floor rails as structural protection at the end of the profile	L×W×H = 275×75×11 mm	100



CABLE TIE WITH EDGE CLIP

The cable ties with edge clip guarantee orderly string routing along the system and prevent damage caused by moving or free cables.

CABLE TIE WITH EDGE CLIP

Item no.	Größe	Details	Min. tensile strength	Bundle diameter	Packaging
52215-1088	200×4,8 mm	With edge clip 0.7-3.0mm cable routing laterally along the mounting point	220 N	1-45 mm	500

BENDING TONG

With the bending tong it is possible to bend the ridge connector with minimal effort to the required angle. This allows an exact adjustment to the roof.

BENDING TONG

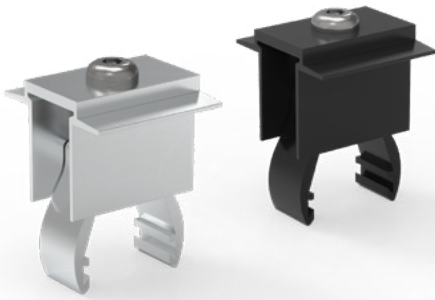
Item no.	Details	Length	Packaging
52215-0562	Bending the ridge connector of the base profile to the desired angle	800 mm	1

A 3D technical rendering of a multi-system component assembly. The assembly consists of several interconnected parts, including a long horizontal rail, a vertical support structure, and various mounting brackets and fasteners. The components are shown in a dark blue color with a metallic texture. The background is a dark blue gradient with a faint grid pattern.

MULTI-SYSTEM COMPONENTS

UNIVERSAL COMPONENTS THAT
CAN BE INSTALLED WITH PMT PRODUCTS.

MODULE & BALLAST CLAMPS



The clamps act both as module fixation on base and tower and to secure the ballast stones on the base profile. The project report differentiates between the two.

Use for frame heights 30-50 mm.
The items marked with * are used to fix the ballast. The distinction is only made in the project report.

MID CLAMP

Item no.	Length	Details	Packaging
52215-0132 52215-1428*	40 mm	Aluminium, Used as a module clamp & ballast clamp	40
52215-0647		Black anodized, Used as a module clamp	
52215-1825		Aluminium incl. grounding sheet, Used as a module clamp	



END CLAMP

Item no.	Length	Details	Packaging
52215-0133 52215-1427*	35 mm	Aluminium, Used as a module clamp & ballast clamp	10
52215-0648		Black anodized, Used as a module clamp	



GROUNDING SHEET

This grounding sheet can be fitted afterwards, to ensure safe grounding.

GROUNDING SHEET

Item no.	Details	Packaging
52215-1188	For a retrofit mounting on the middle clamp	40

MOUNTING FOOT AND SLEEVE



The mounting foot additionally secures the system against slipping on the roof. The exact article configuration depends on the specific roof covering. Please note that you must define the screws for fastening the mounting foot in the roof substructure based on the insulation thickness and the roof substructure, and order them separately.

Item no.	Details	Dimensions	Packaging
52215-1267	Mounting foot with bitumen primer	30×30 cm	1
52215-2333	Sleeve bitumen	50×50 cm	
52215-1270	Mounting foot with PVC coating	30×30 cm	
52215-1271	Sleeve PVC	50×50 cm	
52215-1272	Mounting foot A2, degreased and roughened	30×30 cm	
52215-1623	Sleeve polyester fleece 45 × 45 cm	45×45 cm	



ACCESSORIES MOUNTING FOOT

To seal the mounting foot with the roof cladding, sleeves or various liquid plastics can be used. The selection is made on the basis of the specific roof covering.

ACCESSORIES

Item no.	Details	Packaging
52215-1624	QuiTex DA, 5,5 kg, cask	1
52215-1627	Roofing membrane and tool cleansing, 1 l, cask	
52215-1932	Washprimer, 0,2 kg, cask – for PVC and Metal	
52215-2125	QuiTex Primer, 0,2 kg, cask – for FPO and TPO	



FIXATION SCREWS FOR MOUNTING FOOT

The choice of screw is based on the nature of the insulation and the roof structure. Each mounting foot is fixed with six screws. Other screw lengths are available on request.

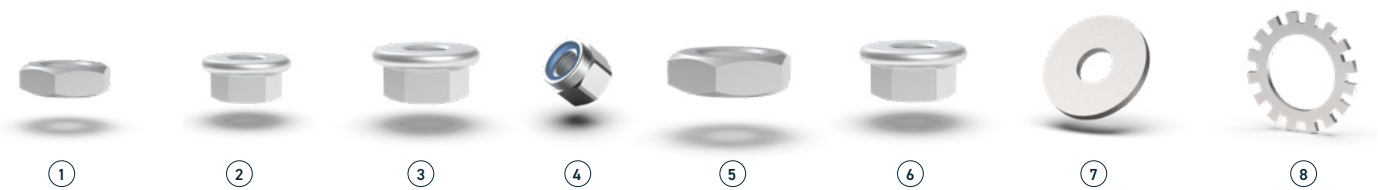
FASTENING SCREWS MOUNTING FOOT

Item no.	Type of roof construction	Length (screw)	Thickness of insulation	Packaging
52215-2137	Trapezoidal sheet fixation	150 mm	70-120 mm	100
52215-1273		200 mm	121-170 mm	
52215-2139		255 mm	171-200 mm	
52215-2494	Concrete (min. 100mm thickness)	178 mm	85-110 mm	
52215-2495		203 mm	110-135 mm	
52215-2497		255 mm	165-190 mm	
52215-2498		280 mm	190-215 mm	



SCREWS

Item no.	Figure	Details	Application area	Packaging
52215-1450	1	Concrete screw 6×60 mm – Multi-Monti	Fixation of ballast under base profiles	50
52215-1599	2	Screw M8×16 mm – DIN 7380-2	Side cover, rare wall, mid support, fall protection, support sheet for solar sensor	
52215-1460	3	Screw M8×30 mm – ISO 7380-1	Cross strut & cross strut adapter to tower	
52215-1654	4	Screw M8×16 mm – ISO 7380	Fixation of ridge connector	
52215-1933	5	Thin sheet screw 4,8×19 mm	USO-Connection	200
52215-0656	6	Thin sheet screw 4,8×19 mm – E29	Ballast tubs	50
52215-0571	7	Thin sheet screw 4,5×25 mm	Fixation of support for trapezoidal sheet	100
52215-0445	8	T-head screw M8×20 mm – Typ 28/15, A2	Fixation of bracket 40mm M8	50
52215-1742	9	T-head screw M10×30 mm	Fixation of bracket 60mm with ridge rail on mounting foot	100



NUTS & WASHERS

Item no.	Figure	Details	Application area	Packaging
52215-1340	1	Nut M6 – DIN 934	Support sheet solar sensor to carrier plate	10
52215-0564	2	Self-locking Nut M8	Bracket 40 mm M8	50
52215-1398	3	Self-locking Nut M10	Fixation of bracket 60mm with ridge and base rail of FLAT DIRECT	500
52215-1320	4	Locknut M12	Fixation of bracket 60mm with ridge rail and mounting foot of FLAT DIRECT	50
52215-1659	5	Hex Nut M12	Fixation of USO	
52215-0969	6	Hex Nut M12 with self-locking & bead	Fixation of USO to mounting foot	200
52215-4218	7	Washer DIN 9021-13-A2	Fixation of USO to mounting foot	50
52215-1408	8	Serrated washer M12 A2	Fixation of USO to mounting foot	100

Service-Hotline

+47 993 53 514

We are happy to offer you expert advice

SCOTT NORGE AS
Krokatjønnveien 11c
5142 Fyllingsdalen, Bergen

T +47 993 53 514
F +47 924 30 907
post@scott.no

www.scott.no

Technical changes, delivery possibilities and errors excepted.